

SOME STEPS FOR GENRE ANALYSIS

GLOBAL VS. LOCAL APPROACH

Global Key Concerns:

- *How do big-picture decisions create a holistic argument?*

Local Key Concerns:

- How do these sentence-level decisions affect how the argument is expressed?

At the Paragraph Level:

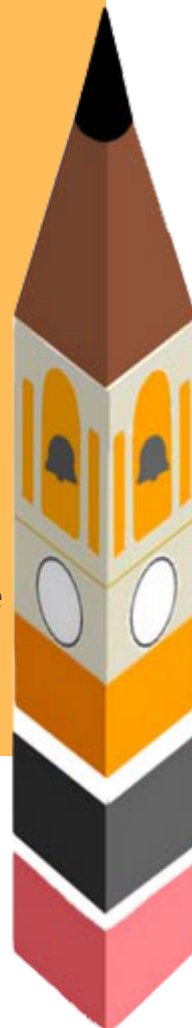
- *Saying* -- What is the author's overall message?
- *Doing* -- What is the author doing to assist in the development of the argument?

At the Argument Level:

- *Saying* -- What is the author's overall message in the document?
- *Doing* -- How is the author scaffolding the support of their argument?

REVERSE OUTLINING APPROACH

- Identify main purpose (thesis) of document.
- Identify the main idea/purpose of each paragraph.
 - *Write this in the margins.*
- Articulate relationship between main idea of a paragraph and the purpose (thesis) of the document.
 - *How does this paragraph support the main purpose of this document?*
- If comparing to other documents in the same genre, identify similarities and differences in the documents' organization and the logic of how information is arranged.



PURDUE

WRITING LAB